



£2,750
Hertford Road
Stevenage, SG2 8ST

PROPERTY SUMMARY

Nestled on Hertford Road in the charming area of Bragbury End, this impressive detached chalet-style house offers a unique blend of space, comfort, and versatility. Set within an established plot of approximately 0.213 acres, the property boasts a striking double-fronted elevation and an expansive living area of around 2415 square feet.

Upon entering, you are greeted by a deep central reception hall, which features a part gallery above, creating an inviting atmosphere. The dual aspect sitting room, complete with a fireplace, provides a warm and welcoming space for relaxation. The recently fitted kitchen, accompanied by an adjoining breakfast room, is perfect for family gatherings. Additionally, the ground floor includes a utility room, a family room, and a study that can easily serve as a fourth bedroom, along with a convenient ground floor bathroom.

The first floor comprises three generously sized double bedrooms, complemented by an additional shower room, all accessed via a feature central landing. A notable highlight of this property is the converted garage, which now functions as a self-contained annexe, complete with its own kitchen, bathroom, and living area—ideal for guests or as a home office.

The mature and private rear garden, measuring approximately 100 feet, features a lovely patio area with steps leading down to a deep lawn, surrounded by established shrubs, providing a tranquil outdoor retreat. The property is secured by electronic gates leading to a private driveway, offering parking for up to four cars.

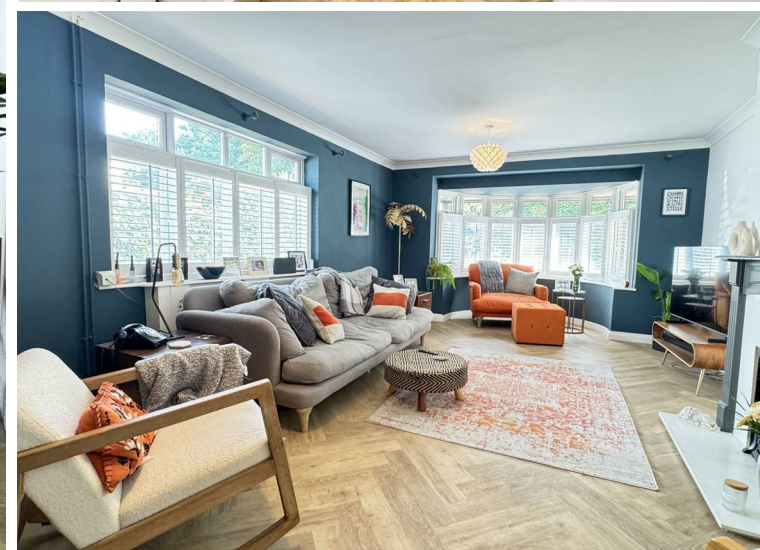
4



2



1





PUTTERILLS
LETTINGS

est. 1992







LOCAL AUTHORITY

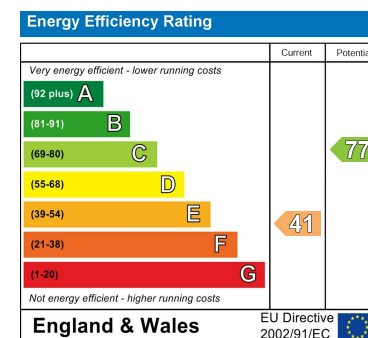
TENURE

COUNCIL TAX BAND

F

VIEWINGS

By prior appointment only



Agents Note: Whilst every care has been taken to prepare these particulars, they are for guidance purposes only. All measurements are approximate and are for general guidance purposes only and whilst every care has been taken to ensure their accuracy, they should not be relied upon and potential buyers/tenants are advised to recheck the measurements



OFFICE ADDRESS

Putterills Lettings
123 London Road
Knebworth
SG3 6EX

OFFICE DETAILS

01462 419333
lettings@putterills.co.uk
www.putterills.co.uk